



Earl Warren Middle School School Map

Navigating a middle school campus can be overwhelming for students and their families. That is why the Earl Warren Special Education team developed this resource map.



Earl Warren Middle School (EWMS) is committed to individual student achievement and success. We continuously work to develop curriculum strategies that enhance the development of each child's potential. Our school enjoys a small but diverse student population, in which students benefit from being a part of a true community of learners. We focus on increasing the achievement of all subgroups. We provide ongoing staff development and evaluation to ensure that all teachers integrate California Content Standards throughout the curriculum. EWMS offers numerous support programs to assist students' academic and social growth. Homeroom and sustained silent reading are important parts of our learning environment. Support groups explore decision-making and coping skills, teach study skills, and develop personal and academic goals. Our entire community is dedicated to the success of every student.

Contact information:

Phone: (858) 755-1558

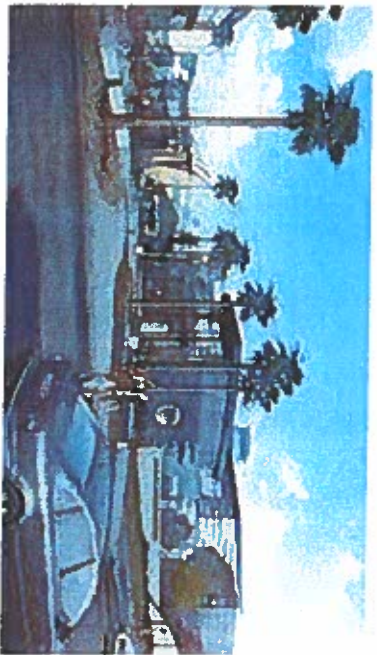
Fax: (858) 755-0891

Website: www.ew.sduhsd.net



155 Stevens Avenue
Solana Beach, CA 92075

A school Resource
Map for Families of
Students attending Earl
Warren Middle School
2018-2019



Aeries

Student Information System

Parents may access attendance information and grades through their student's Aeries account. To set up an Aeries account, please contact counseling secretary/registrar Shirley Blekeberg at (858) 755-1558 x 4410

Special Education Services and Supports

Case Managers

Your case manager is your first point of contact if you have questions about your child's academic progress or want to discuss the services and supports available to students at EWMS.

Last names and extensions: Dekker (ext. 4435), Halling (ext. 4481), Latham (ext. 4478)

Supplemental Services and Support:

Earl Warren has a robust variety of aides, services and supports for students with disabilities. Contact your case manager if you have questions about these supports.

- **School Psychologist**
Jennifer Emberger (ext. 4413)
- **Speech Language Pathologist**
Julia Chowdhury (ext. 4476)
- **Occupational Therapy**
Joy Bischke (ext. 4417)
- **Assistive Technology**
Kelly Dunn (ext. 5554)
- **District Nurse**
Anna Weirather
- **EWMS Health Tech** (ext. 4414)
- **District Interpreter**
Carmen Blum (ext. 5545)



Administration

Principal: Justin Conn
Principal Secretary: Martha Hutchinson
Assistant Principal: Kaitlin Wood
Assistant Principal Secretary: Rebecca Topete

Attendance Office

Monica Ramirez
Phone: 858.755.1558 ext. 4404

Counseling Office

Jessica Craven
Phone: 858.755.1558 ext. 4454

Registrar

Shirley Blekeberg
Phone: (858) 755-1558, ext 4410

